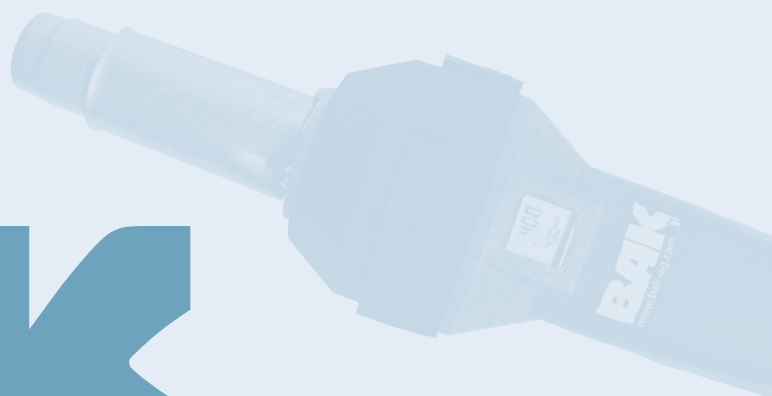
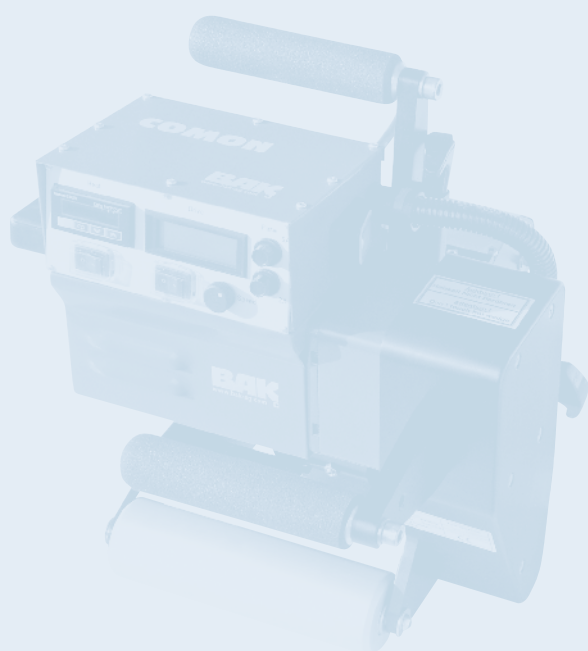


# HEAT ON

## Plastic welding machines



# BAK

[www.bak-ag.com](http://www.bak-ag.com)

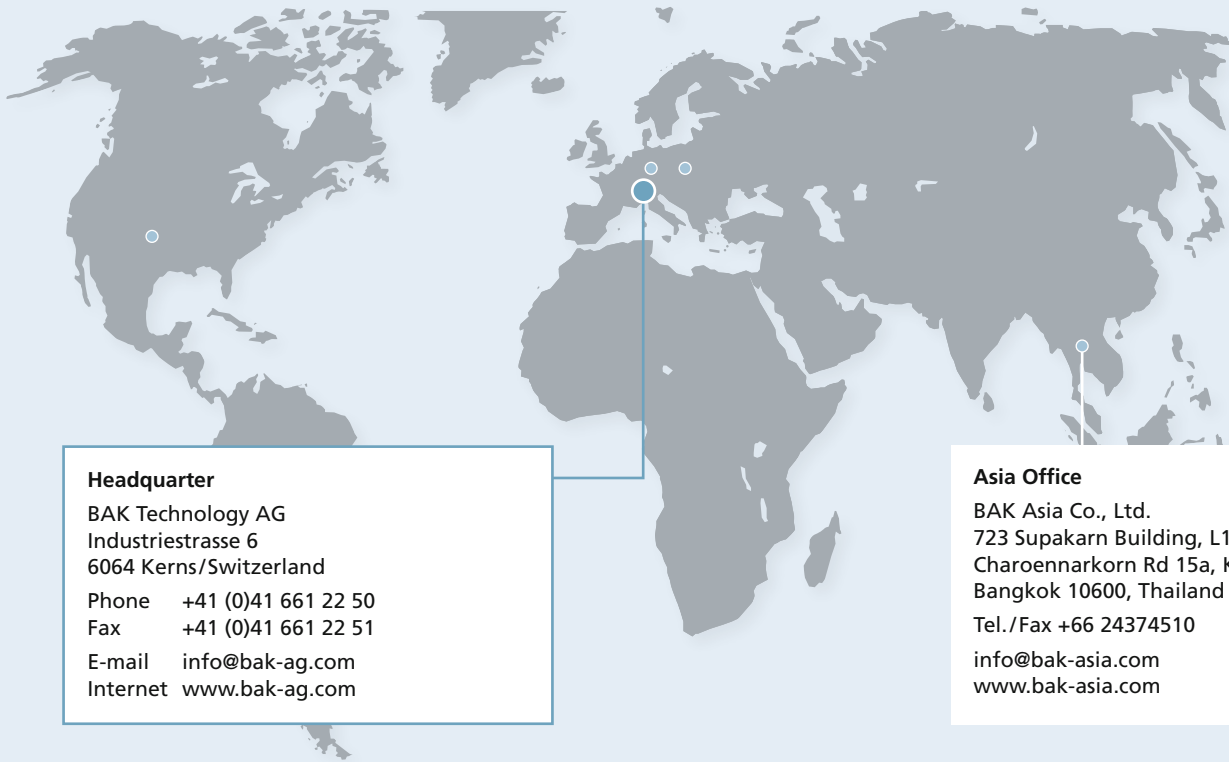


BAK Technology AG  
Industriestrasse 6  
6064 Kerns / Switzerland

E-Mail [info@bak-ag.com](mailto:info@bak-ag.com)  
Telefon +41 (0)41 661 22 50  
Fax +41 (0)41 661 22 51

*quality  
wins!*

# HEAT ON



## Headquarter

BAK Technology AG  
Industriestrasse 6  
6064 Kerns/Switzerland  
Phone +41 (0)41 661 22 50  
Fax +41 (0)41 661 22 51  
E-mail [info@bak-ag.com](mailto:info@bak-ag.com)  
Internet [www.bak-ag.com](http://www.bak-ag.com)

## Asia Office

BAK Asia Co., Ltd.  
723 Supakarn Building, L18  
Charoennarkorn Rd 15a, Klongsarn  
Bangkok 10600, Thailand  
Tel./Fax +66 24374510  
[info@bak-asia.com](mailto:info@bak-asia.com)  
[www.bak-asia.com](http://www.bak-asia.com)

BAK Technology AG is a leading manufacturer of plastic welding equipment, extruder, air heaters and blowers.

We present the best solutions for plastic fabrication, pipe construction, roofing, civil engineering, tunnelling, process heat, tarpaulins, flooring and much more.

BAK is a traditional Swiss company with head quarter in Kerns, Obwalden. Our production- and development facilities are in Switzerland, Germany and Austria.

We are offering a wide range of machines and accessories:

- Hot air tools (hand held)
- Wedge welding machines
- Hand extrusion welders
- Industrial heaters
- Heating- & folding machines
- Hot air welding machines
- Hot air blowers
- Industrial extruder
- Industrial blowers
- Test equipment

**BAK, quality wins! Best quality products and customer service are the most important to us!**

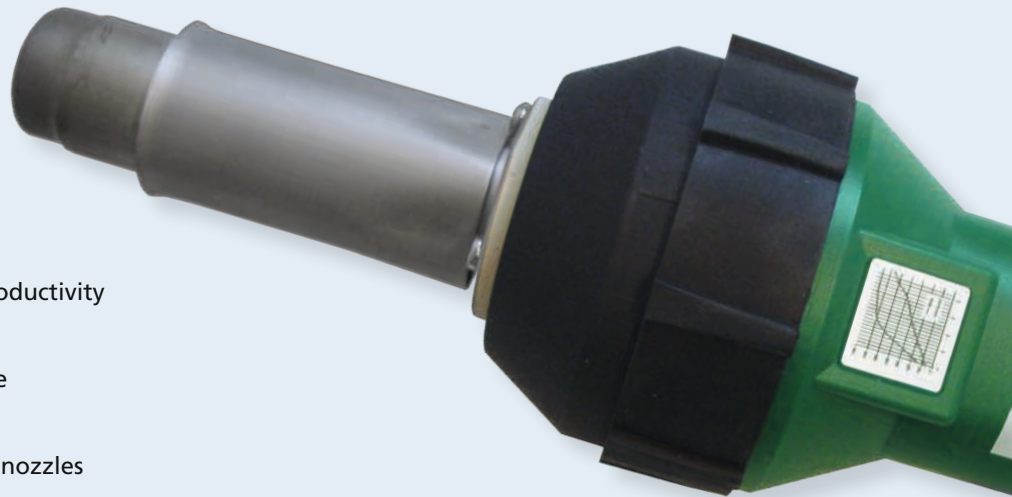
Through our experience of many years and the continuous development within the market we make sure to only offer best quality and service to our demanding customers. We guarantee ideal customer service all over the world with the trustful partnership to our distributors who are placed in over 40 countries.

Hot air welding tool

# RION

## Field tested, cost-effective, handy

- optimal performance / best price
- high speed welding enables high productivity
- stepless adjustment of temperature
- easy welding with ergonomic handle
- high quality
- heater tube for push fit or screw on nozzles
- large accessories range



The high-performance hand gun to weld all different types of thermoplastic materials, for roofing, flooring, tarps, plastic fabrication and many more.

#### Technical data

Voltage	V	120/230
Frequency	Hz	50/60
Power consumption	W	1600
Temperature	°C	20–650
Air flow	l/min	approx. 250
Static pressure	Pa	approx. 3000
Noise level	dB	64
Size	mm	100 x 340, handle Ø 56
Weight	kg	1,3 with cord
Markings		CE

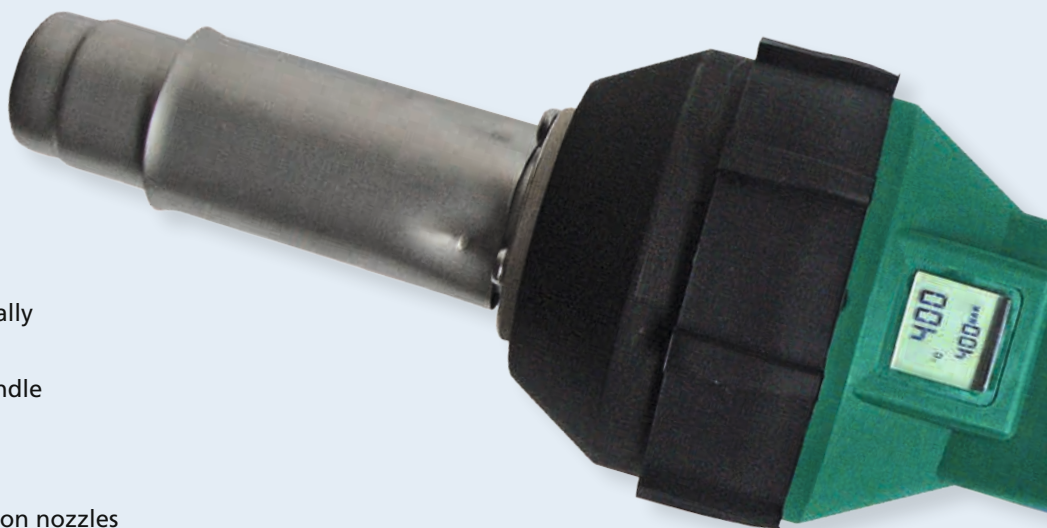
On request also available with brushless motor.

Hot air welding tool

# RION DIGITAL

Ergonomic,  
reliable,  
precise

- digital read out of set and actual temperature
- stepless adjustment of electronically controlled temperature
- easy welding with ergonomic handle
- light and handy
- high quality
- heater tube for push fit or screw on nozzles
- large accessories range



We made welding easy for you! The practical digital hot air welding gun with ergonomic handle for the welding of all kinds of thermoplastics.

#### Technical data

Voltage	V	120/230
Frequency	Hz	50/60
Power consumption	W	1600
Temperature	°C	20–600
Air flow	l/min	approx. 250
Static pressure	Pa	approx. 3000
Noise level	dB	64
Size	mm	100 x 340, handle Ø 56
Weight	kg	1,3 with cord
Markings		CE

On request also available with brushless motor.

Hot air welding tool

# LIION

## Battery powered, innovative, compact

- long operating time (45 minutes on highest temperature)
- signal before battery is empty
- easy to recharge
- backpack included in order
- high performance



The first professional welding tool with a battery. To weld all different kind of thermoplastic materials, for roofing, flooring, tarps, plastic fabricating and much more.

#### Technical

Voltage	V	max. 60
Power consumption	W	max. 1200
Temperature	°C	20–650
Air flow	l/min	150
Static pressure	Pa	ca. 1600
Noise	dB	55
Size hand tool	mm	340x100, handle Ø 56
Weight hand tool	kg	1,5
Weight total		7,5
Markings		CE

Hot air tool

# MARON

Small,  
powerful,  
flexible

- stepless adjustment of temperature
- adapter tube with heat protection
- for push fit or screw on nozzles
- air supply with blower type HD 140 or SorOn
- connected with blower SorOn for external application



The small welding tool for external air supply with high performance. With heater tube for push fit or screw on nozzles.

#### Technical data MarOn

Voltage	V	230/120
Frequency	Hz	50/60
Power consumption	W	1550/1600
Temperature	°C	20–650
Min. air flow (20°C)	l/min	40
Size	mm	300x62, handle Ø 46
Weight	kg	1,2 with cord and hose
Markings		CE

#### Technical data MarOn, connected with SorOn

Voltage	V	230/120
Frequency	Hz	50/60
Power consumption	W	1700
Temperature	°C	20–650
Air flow	l/min	max. ca. 300
Static pressure	Pa	ca. 3000
Weight	kg	2,5
Markings		CE

# WELDON, WELDON S

**Flexible,  
light,  
precise**

- rotatable heater tube and air hose
- digital read out of set and actual temperature
- stepless adjustment of electronically controlled temperature (digital version)
- fatigue-proof welding thanks to ergonomic handle
- cooled heater tube
- nozzle position 360° adjustable
- large accessories range



The small hand tool for plastic fabricators to weld thermoplastic materials. Air supply with external blower (BAK-Air Station) or compressed air. It's possible to turn the nozzle (heater tube) 360° while welding.

Technical data		WeldOn	WeldOn S
Voltage	V	230/120	230/120
Frequency	Hz	50/60	50/60
Power consumption	W	1000/600	600
Temperature	°C	20–600	20–450
Air flow	l/min	min. 40	min. 40
Pressure	bar	max. 1	max. 1
Size	mm	295 x 62, handle Ø 38	295 x 62, handle Ø 38
Weight	kg	0,75 with 3 m cord, air hose and Y-connection	0,75 with 3 m cord, air hose and Y-connection
Markings		CE	CE

# SORON, AIR STATION

Movable,  
light,  
strong

- small, but powerful
- compact
- for external air supply
- handy
- low noise



Soron

Air Station N80



The small blowers with high power for air supply on the welding tools MarOn or WeldOn/WeldOn S.

Technical data		Soron	Air Station N80	Air Station N200
Voltage	V	120/230	230	230
Frequency	Hz	50/60	50/60	50/60
Power consumption	W	100	86	215
Air flow (20°C)	l/min	400	80	200
Static pressure	Pa	5000		
Air outlet (outside)	mm	14,5	14,5	2x14,5
Size	mm	260x94, handle Ø 64	357x214x230	475x212x332
Weight	kg	1,2 with 3 m cord	6	15
Markings		CE	CE	CE



Hot air blower

# ERON

Powerful,  
ergonomic,  
flexible

Perfect for:

- shrinking
- drying
- soldering
- heating
- activating
- welding
- bending



Stepless temperature adjustment up to 650°C. Powerful with ergonomic handle, for different applications and with a complete line of accessories like nozzles, reflectors, etc.

#### Technical data

Voltage	V	120/230
Frequency	Hz	50/60
Power consumption	W	2300/2700/3400
Temperature	°C	20-650
Air flow	l/min	approx. 600
Static pressure	Pa	approx. 3000
Noise level	dB	64
Size	mm	320x94, handle Ø 64
Weight	kg	1,5 with cord
Markings		CE

On request also available with brushless motor.

Semi-automatic welding machine

# MICON, MICON E

Innovative,  
light,  
smart

- stable and robust design
- speed and temperature stepless adjustable
- for the welding of thermoplastic membranes
- constant temperature and speed
- easy to handle
- pressure is given manual



The economic driven hand tool. Closes the gap between hand welding tool and automatic welding machine.

Available for 30 or 40 mm welding seam.

#### Technical data

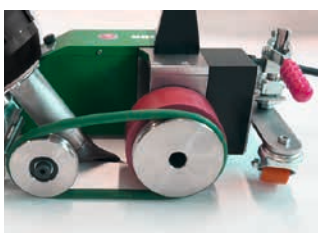
Voltage	V	230/120
Frequency	Hz	50/60
Power consumption	W	2100/1700
Temperature	°C	20-600
Speed	m/min	max. 4
Size (l x w x h)	mm	400 x 170 x 330
Weight	kg	6,8
Markings		CE

Roof welding machine

# TECHON

Compact,  
innovative,  
practical

- small and handy
- low current consumption
- digital read out of temperature and speed
- automatic drive start
- welding seam 40 mm



The small, full automatic welding machine for all jobs on the roof.

#### Technical data

Voltage	V	120/230
Frequency	Hz	50/60
Power consumption	W	1700/2100
Temperature	°C	20-600
Speed	m/min	0.5-4
Size (l x w x h)	mm	450 x 230 x 320
Weight	kg	17
Protection class I		⊕
Markings		CE

# ROOFON, ROOFON DIGITAL

## Small, low-priced, light

- for the welding of thermoplastic roofing membranes
- stepless adjustment of speed, air flow and temperature with potentiometer
- automatic drive start system
- wrinkle-free welding
- seam width of 40 mm
- digital control and read out of temperature and speed (RoofOn Digital, see picture below)



Perfect seam quality of 40 mm even though its very light weight. The RoofOn guarantees wrinkle-free welding through our exceptional technology.

#### Technical data

Voltage	V	230/120
Frequency	Hz	50/60
Power consumption	W	3400/2900
Temperature	°C	20–600
Speed	m/min	0,5–12
Air flow max. (20°C)	l/min	500
Air flow	%	50–100 stepless
Noise level LpA	dB	64
Size (l x w x h)	mm	450 x 330 x 220
Weight	kg	15 with 5 m cord
Protection class I		⊕

# ROOFON MULTI/LT

User-friendly,  
compact,  
light

- for the welding of thermoplastic roofing membranes
- movable rollers
- digital control and read out of temperature and speed
- stepless adjustment of air flow
- automatic drive start system
- wrinkle-free welding



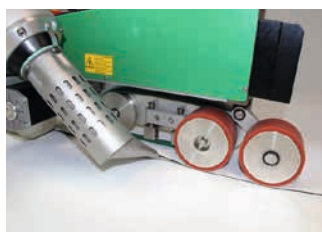
Discover the RoofOn Multi, the all-rounder for the work on small roofs and details.  
Available without digital display in the version LT.

Technical data		
Voltage	V	230
Frequency	Hz	50/60
Power consumption	W	3000
Temperature	°C	20-620
Speed	m/min	0-6
Air flow (20°C)	l/min	500
Air flow	%	50-100
Noise level LpA	dB	64
Size (l x b x h)	mm	380 x 340 x 700 (incl. guide bar)
Weight	kg	21
Markings		CE

# LARON 21

## Innovative, efficient, high-speed

- continuous operation possible because of brushless motors
- designed for the most demanding job sites
- digital display to check voltage before operation
- air flow, speed and temperature stepless adjustable
- for the welding of roofing membranes
- welding of modified bitumen possible with converting kit 80 mm or 100 mm
- Integrated GPS tracker – location of the machine is known at every moment



Easy to handle and user friendly due to optimal design and balance. Work now even more efficient with the LarOn 21, the fastest automatic welding machine in the market. You choose your optimum welding speed anywhere between 0,5–21 m/min.

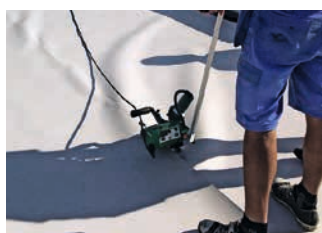
### Technical data

Voltage	V	230/400
Frequency	Hz	50/60
Nominal capacity	W	3600/4600
Power consumption		4600/5700
Temperature	°C	20–620
	°F	68–1148
Speed	m/min	0,5–21
	f/min	1,6–68.8
Size (l x w x h)	mm	610 x 410 x 320
Weight (with weights)	kg	42
	lbs	92
Markings		CE

# STEEPON

Safe welding,  
handy,  
field-tested

- designed for the most demanding job sites
- speed and temperature stepless adjustable
- for the welding of all roofing membranes
- for the work on flat and pitched roofs
- constant pressure, temperature and speed
- for loose laid membranes
- brushless and easy to maintain



Suitable for flat and steep/pitched roofs due to clamping system. For perfect welding seams on any underground.

#### Technical data

Voltage	V	120/230
Frequency	Hz	50/60
Power consumption	W	1800
Temperature	°C	max. 600
Speed	m/min	5
Size (l x w x h)	mm	360 x 330 x 310
Weight	kg	8
Markings		CE

# BELTON T, BELTON P

Universal,  
powerful,  
high speed

- two welding seams in one operation
- for welding of thermoplastic tapes and profiles
- high welding performance
- easy maintenance because of standard controllers
- digital display showing temperature and speed
- automatic drive start system
- easy to convert to different tape widths



For welding of tapes, curtain tapes and tarpaulin bows on truck covers.

Economic and user friendly thanks to the high welding speed and simple design.

#### Technical data

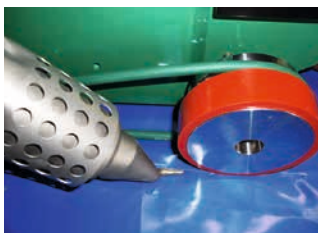
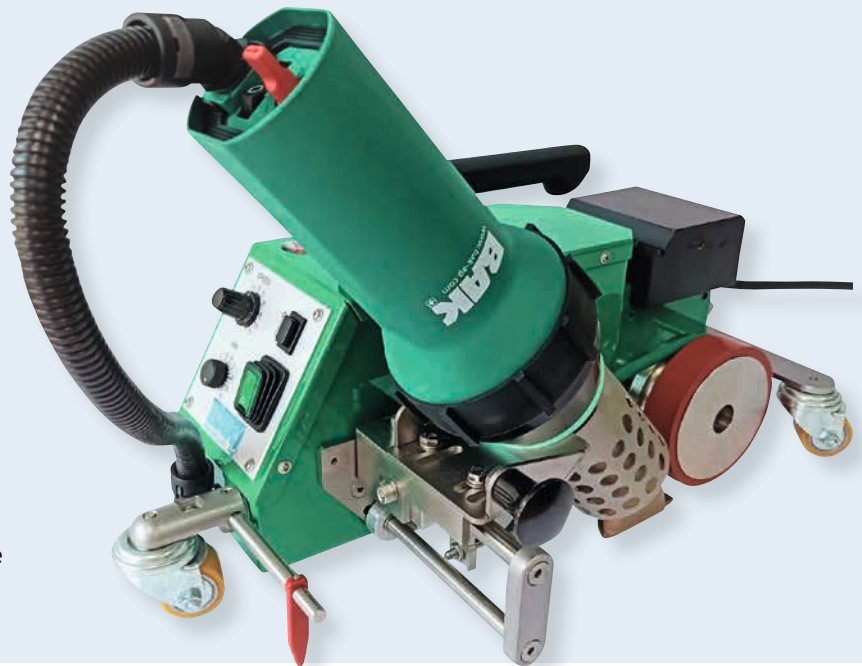
Voltage	V	400
Frequency	Hz	50/60
Power consumption	W	6400
Temperature	°C	20–620
Speed	m/min	max. 24
Tape width	mm	50–150
Size (l x w x h)	mm	900 x 530 x 340
Weight	kg	39
Markings		CE



# PLANON

Simple,  
robust,  
competitive

- for welding of coated fabrics, foils, billboards, banners and tarps
- robust and mature technology
- automatic drive start system
- high welding speed
- economic and user-friendly
- adjustment of welding speed and temperature with potentiometer



Simple to operate and very reliable because of robust design. Available for 20, 30 or 40 mm width welding seam.

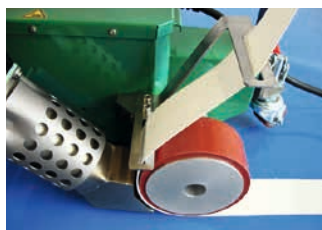
#### Technical data

Voltage	V	230/120
Frequency	Hz	50/60
Power consumption	W	3400/2900
Temperature	°C	20-600
Speed	m/min	0,5-12
Air flow max. (20°C)	l/min	500
Air flow	%	50-100 variable
Noise level	dB	50
Size (l x w x h)	mm	460 x 360 x 310
Weight	kg	14 with 5 m cord
Protection class I		⊕
Markings		CE

# PLANON-BAND

Clever,  
inexpensive,  
efficient

- for welding of thermoplastic tapes
- approved and robust technology
- automatic drive start system
- economic and user-friendly
- stepless adjustment of speed and temperature with potentiometer



For welding of tapes and curtain tapes on truck covers. Available for 40 or 50 mm width tapes.

Technical data		
Voltage	V	230
Frequency	Hz	50/60
Power consumption	W	3700
Temperature	°C	20–600
Speed	m/min	0,5–12
Air flow max. (20°C)	l/min	500
Air flow	%	50–100 stepless
Noise level LpA	dB	50
Size (l x w x h)	mm	460 x 360 x 640
Weight	kg	18 with 5 m cord
Protection class I		⊕
Markings		CE

Combined wedge-hot air welding machine

# PROTON AIR

User-friendly,  
robust,  
compact

- small, light and very robust
- drive and heater motor brushless
- for thin material and overhead welding
- simple to operate
- stepless adjustment of all welding parameters and air flow
- material welding range: PE-LD, PE-HD, PVC-P, PP, ECB, EVA, TPO
- integrated GPS tracker



The small and light automatic welding machine to weld all different kind of materials. For civil engineering and tunnel construction. Combined wedge with hot air and contact. Location of the machine is known with the myBAK app.

#### Technical data

Voltage	V	230/120
Frequency	Hz	50/60
Power consumption	W	2200
Temperature	°C	max. 550
Speed	m/min	max. 5
Welding pressure	N	max. 1200
Size (l x w x h)	mm	370 x 340 x 330
Seam dimensions (other sizes on request)	mm	15 - 15 - 15
Weight	kg	9,8
Markings		CE

Hot wedge welder

# PROTON WEDGE

Compact,  
lightweight,  
handy

- small and light with high welding performance
- service friendly
- stepless adjustment of all welding parameters
- user friendly operation
- material welding range: PE-LD, PE-HD, PP, ECB, EVA, TPO
- integrated GPS tracker



The small and light compact wedge welder to weld all different kind of thermoplastic geomembranes. Location of the machine is known with the myBAK app.

#### Technical data

Voltage	V	230
Frequency	Hz	50/60
Power consumption	W	900
Temperature	°C	max. 420
Speed	m/min	max. 2,5
Welding pressure	N	max. 1200
Size (l x w x h)	mm	370 x 435 x 280
Seam dimensions (other sizes on request)	mm	15 – 15 – 15
Weight	kg	9,5
Markings		CE

Hot wedge welder

# COMON 2

## Adaptable, durable, efficient

- optimal performance/best price
- high welding capacity, speed and quality
- field tested electronics, service friendly
- maintenance-free servo drive motor
- stepless adjustment of pressure, speed, and temperature
- stable, lightweight and compact design
- material welding range: PE-LD, PE-HD, PE-C, PVC-P, PP, ECB, EVA, TPO
- welding range HD-PE: 1,0–3,0 mm



Simple, reliable operation combined with the maintenance-free servo motor and field tested electronics. The ComOn is designed for the most demanding jobsites.

### Technical data

Voltage	V	230
Frequency	Hz	50/60
Power consumption	W	1700
Temperature	°C	20–420
Speed	m/min	0,8–5,0
Welding pressure	N	max. 1400
Size (l x w x h)	mm	460 x 300 x 330
Seam dimensions (other sizes on request)	mm	15–15–15
Weight	kg	14
Markings		CE

Hot wedge welder

# COMON3

**Strong,  
fast,  
innovative**

- high welding capacity, speed and quality
- digital read out of temperature, speed and pressure
- changing of wedge made easy because pluggable
- material welding range: PE-LD, PE-HD, PE-C, PVC-P, PP, ECB, EVA, TPO
- welding range HD-PE: 1.0-3.0mm
- integrated GPS tracker – location of the machine is known at every moment
- optional available with kit to use Handtool for pre heat and drying



The strong and fast wedge welder with an unbeatable price/performance ratio. Because of the powerful and maintenance-free servo motor, the ComOn3 is fitting for the most demanding job sites.

#### Technical data

Voltage	V	230
Frequency	Hz	50/60
Power consumption	W	2100/1700
Temperature	°C	20–460
Speed (switchable)	m/min	5/10
Wedge length	mm	100/80
Welding pressure	N	1500
Size (l x w x h)	mm	450 x 280 x 350
Seam dimensions (other sizes on request)	mm	15–15–15
Weight	kg	18,5
Markings		CE

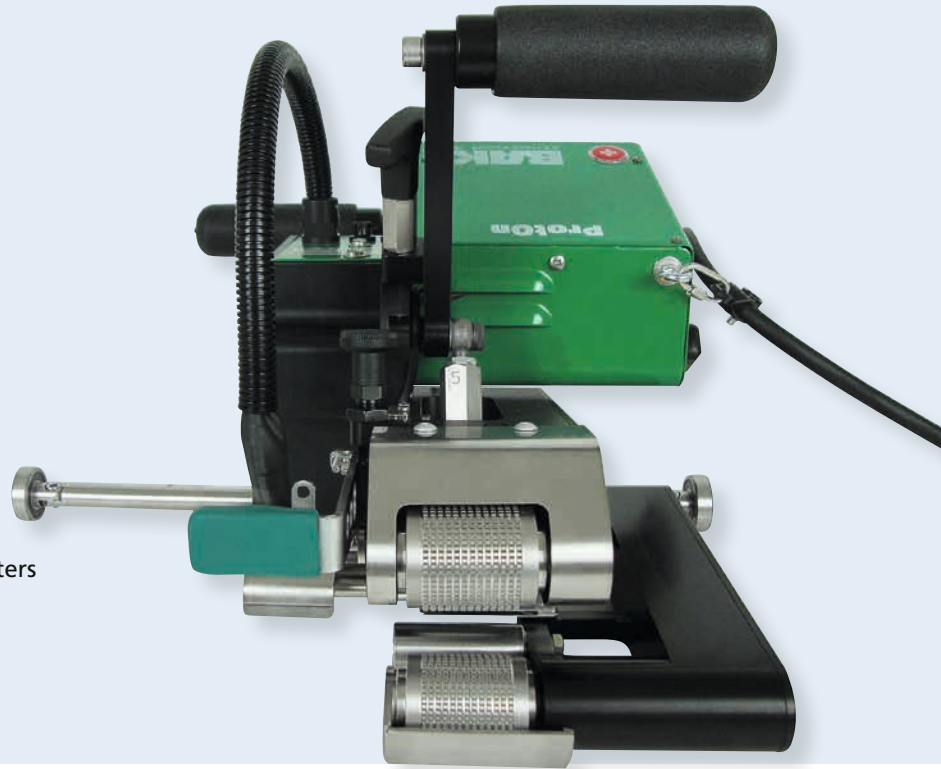
On request a version with recording of the welding parameters is available.

Hot wedge welder

# PROTON PRE FAB

Reliable,  
efficient,  
innovative

- small, light and fast
- drive motor brushless
- to prefabricate thin material
- simple to operate
- stepless adjustment of all welding parameters
- material welding range: PE-LD, PE-HD, PVC-P, PP, ECB, EVA, TPO
- integrated GPS tracker



The small and light hot wedge welding machine to prefabricate thin material. Perfect welding seams with high welding speed. Location of the machine is known with the myBAK app.

#### Technical data

Voltage	V	230
Frequency	Hz	50/60
Power consumption	W	900
Temperature	°C	max. 300
Speed	m/min	max. 10
Welding pressure	N	max. 800
Size (l x w x h)	mm	370 x 435 x 280
Seam dimensions (other sizes on request)	mm	35
Weight	kg	11
Markings		CE

# TESTON

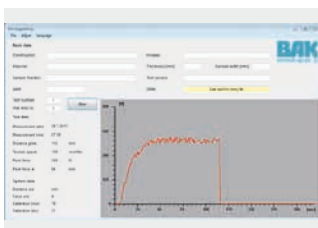
Reliable,  
handy,  
precise



- for shear- and tensile tests
- simple clamping of test material
- storage of data with USB-stick
- printout of data as graphic
- rotatable jaws



Tensiometer type TestOn for the quality control of your welding seam with easiest operation. High precision and recording even on the construction site.



Technical data		
Voltage	V	120/230
Frequency	Hz	50/60
Power consumption	W	250
Tension force	N	max. 2000
Drive speed	mm/min	max. 200
Drive distance absolute	mm	max. 450
Size (l x w x h)	cm	105 x 15 x 16
Weight	kg	14,8
Number of saved measurements		max. 64
External saving		USB-stick
Protection class I		⊕
Markings		CE



# SOLON

Superior,  
fast,  
reliable

- for welding of thermoplastic floors and linoleum
- stepless adjustment of speed, air flow and temperature with potentiometer
- automatic drive start system
- optical wall switch with backlash make sure the machine stops at the wall and the floor is not burned
- integrated deroller system



Due to a high air flow the SolOn has a very strong welding capacity. User-friendly because of approved and safe technology.

#### Technical data

Voltage	V	230/120
Frequency	Hz	50/60
Power consumption	W	3500/2900
Temperature	°C	20–600
Speed	m/min	0,5–12
Air flow max. (20°C)	l/min	500
Air flow	%	50–100 stepless
Noise level LpA	dB	64
Size (l x w x h)	mm	460 x 360 x 500
Weight	kg	16 with 5 m cord
Protection class I		⊕

# ROTON

Handy,  
precise,  
reliable

- cuts welding grooves into all different types of floor coverings
- enables cut grooves along the walls
- integrated dust exhaust fan
- two levels of cutting speed
- three-point rest during milling to even unevenness
- adjustable guide roller enables milling of nap covers
- simple changing of cutting blade



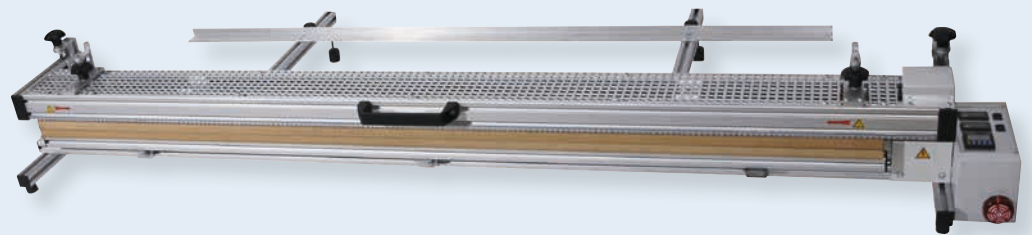
The reliable grooving machine to cut welding grooves into all different types of floor coverings without dust.

#### Technical data

Voltage	V	230/120
Frequency	Hz	50/60
Power consumption level 1	W	350
Power consumption level 2	W	700
Speed level 1	U/min	14800
Speed level 2	U/min	18500
Noise level LpA	dB	78
Groove depth adjustment	mm	0-4, stepless
Size (l x w x h)	mm	210 x 210 x 262
Weight	kg	4,8 with 3 m cord
Markings		CE

# HEAT BATTEN

**Economic,  
flexible,  
low-priced**



- electronic controlled heating element
- digital display showing set and actual temperature
- timer with acoustic alarm
- parallel limit stop as accessory



The table heat batten for bending of thermoplastic material up to 12 mm thickness and films up to 1 mm.

Technical data		Table heat batten with single heating system	Table heat batten with upper- and lower heating system
Voltage	V	230	230
Frequency	Hz	50/60	50/60
Power consumption	W	500–1600 depending on working width	1400–3200
Max. working width	mm	1000, 2000, 3000	1000, 2000, 3000
Max. material thickness	mm	6	12
Weight	kg	7–24	22–46
Protection class I		⊕	⊕

# ACCESSORIES



**Pressure roller 28 mm (silicon)**  
Order no. 5106977



**Pressure roller with ball bearings (brass)**  
Order no. 5106972



**Angled nozzle (Ø 32 mm) 20 mm 90°**  
push fit  
Order no. 5107124



**Pressure roller 40 mm (silicon)**  
Order no. 5106975



**Fillet coater**  
Order no. 5201324



**Angled nozzle (Ø 32 mm) 20 mm 60°**  
push fit  
Order no. 5107125



**Pressure roller 28 mm (PTFE)**  
Order no. 5106976



**Chamfer plane**  
Order no. 5201445



**Wide slot nozzle (Ø 32 mm) 30 x 2 mm 15°**  
push fit  
Order no. 5105494



**Pressure roller 40 mm (PTFE)**  
Order no. 5106971



**Hand grooving tool**  
Order no. 5106966



**Wide slot nozzle (Ø 32 mm) 40 mm**  
push fit  
Order no. 5107132



**Pressure roller power**  
Silicon 40 mm      5106983  
PTFE 40mm      5106984



**Spatula**  
Order no. 5106969



**Wide slot nozzle (Ø 32 mm) 40 mm perforated**  
push fit  
Order no. 5107133



**Pressure roller 80 mm (silicon)**  
Order no. 5106974



**Spatula slide**  
Order no. 5200092



**Angled nozzle SP20**  
right      Order no. 6660004  
left      Order no. 6660005



**Pressure roller 90 mm (PTFE)**  
Order no. 5800226



**Wide slot nozzle (Ø 32 mm) 20 mm**  
push fit  
Order no. 5107123



**Wide slot nozzle (Ø 50 mm) 70 x 10 mm**  
Order no. 5107258

# ACCESSORIES



**Wide slot nozzle**  
(Ø 50 mm) 75 x 2 mm  
Order no. 5107266



**Tacking nozzle**  
screw on M14  
Order no. 5106988



**Adapter with thread**  
M10 (Ø 32 mm)  
Order no. 5201013



**Wide slot nozzle**  
(Ø 50 mm) 150 x 12 mm  
Order no. 5107270



**Drawing nozzle**  
screw on M14  
Round 3 mm 5113876  
Round 4 mm 5113874  
Round 5 mm 5113875



**Adapter with thread**  
M14 (Ø 32 mm)  
Order no. 5201014



**Tubular nozzle**  
(Ø 32 mm) 5 mm  
push fit  
Order no. 5100303



**Drawing nozzle with tacking tip**  
screw on M14  
Round 3 mm 5113666  
Round 4 mm 5113399  
Round 5 mm 5113873



**Sieve reflector**  
10 x 12 mm (Ø 8,25 mm)  
push fit  
on tubular nozzle 5 mm  
Order no. 5107324



**Tacking nozzle**  
push fit  
on tubular nozzle 5 mm  
Order no. 5106996



**Drawing nozzle without tacking tip**  
screw on M14  
Profile 5,7 mm 5113877  
Profile 7,0 mm 5106986



**Sieve reflector**  
(Ø 32 mm) 35 x 20 mm  
Order no. 6107338



**Speed welding nozzle**  
push fit  
on tubular nozzle 5 mm  
Round 3 mm 5106989  
Round 4 mm 5106990  
Round 5 mm 5106991



**Draw nozzle with tacking tip**  
screw on M14  
Profile 5,7 mm 5113670  
Profile 7,0 mm 5113671



**Sieve reflector**  
(Ø 32 mm) 50 x 35 mm  
Order no. 6107337



**Speed welding nozzle**  
push fit  
on tubular nozzle 5 mm  
Profile 5,7 mm 5106992  
Profile 7,0 mm 5106993



**Angled adapter**  
25° angular  
for draw nozzle M14  
Order no. 5201020



**Scraper short 100 mm**  
Order no. 5200142



**Tubular nozzle 5 mm**  
screw on M14  
Order no. 5105622



**Angled adapter**  
40° angular  
for draw nozzle M14  
Order no. 5201021



**Scraper long 220 mm**  
Order no. 5200143



**Scraper**  
Order no. 5106967



**Keder kit PlanOn**  
20 mm Order no. 5230189  
30 mm Order no. 5230192  
40 mm Order no. 5230193



**JAMAS Membrane cutter**  
Order no. 5201230



**Scraper 2 edge**  
Order no. 5201470



**Guide handle  
ProtOn / SteepOn**  
Order no. 6600298



**Test needle PVC**  
Order no. 5201700



**Scraper 3 edge**  
Order no. 5201440



**Walking support MicOn**  
Order no. 6600319



**Test needle PE**  
Order no. DX073



**Scraper with  
double handle**  
Order no. 5200140



**Bitumen welding kit  
LarOn**  
80 mm Order no. 6108923  
100 mm Order no. 6108924



**Tensiometer Handy**  
Order no. 5200171



**Welding seam planer**  
Order no. 5200146



**Metal case  
RiOn / ErOn**  
Order no. 5201000



**Sheet puller**  
Order no. DX071



**Hook knife  
with cover**  
Order no. 5800000



**Metal case LarOn**  
Order no. 5201001



**Carbide blade**  
for RotOn  
Round 2,8 mm 6102403  
Round 3,5 mm 6102405  
Trapeze 3,5 mm 6102401



**Hem kit PlanOn**  
Adjustable for hem width  
20, 25, 30, 35, 40 mm  
Order no. 5230109



**Metal case  
PlanOn / RoofOn /  
ComOn / SteepOn / ProtOn**  
Order no. 5201008  
**RoofOn Multi**  
Order no. 5232551



**Welding rod**  
Different types, profiles and  
colours

# SNEAK-PEAK AT THE EXTRUDER LINE

## MICRO

Small,  
light,  
unique

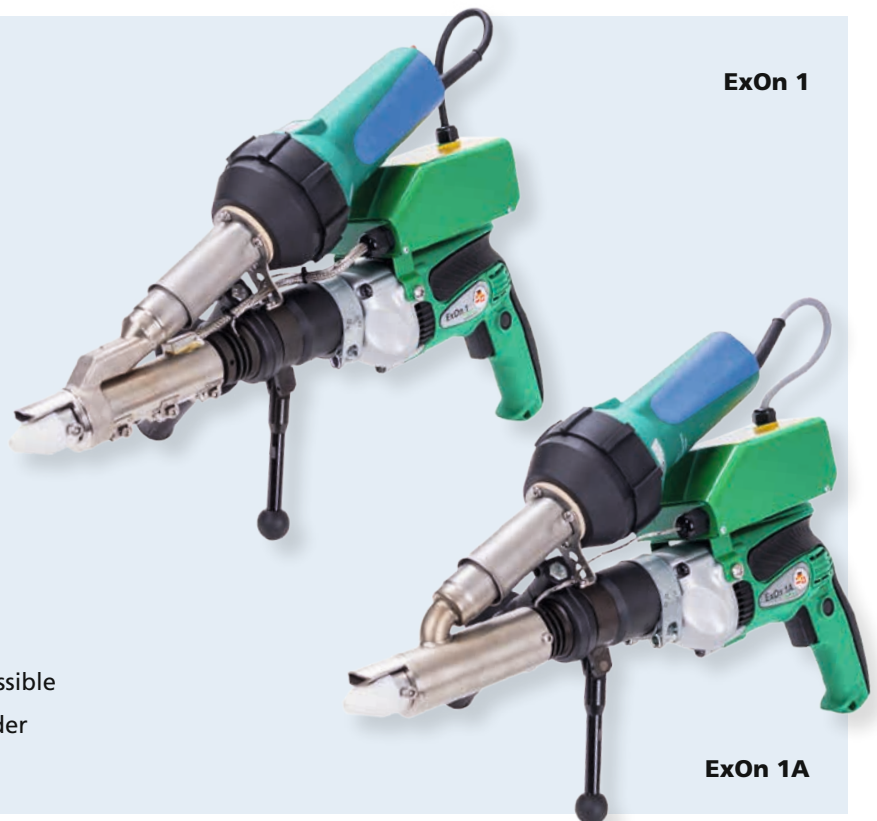
- for welding of PE, PP, PVDF and PVC
- air and mass temperature can be regulated separately
- internal air supply built-in in the control box
- brushless motor for drive and blower



## EXON 1/1A

Handy,  
fail-proof,  
powerful

- air and mass temperature can be regulated separately (ExOn 1)
- air heated (ExOn 1A)
- 360° rotation of the welding shoe possible
- 2x welding shoes included in your order
- large range of accessories available



## EXON 2/2A

Flexible,  
ergonomic,  
efficient

- air and mass temperature can be regulated separately (ExOn 2)
- air heated (ExOn 2A)
- 360° rotation of the welding shoe possible (ExOn 2A)
- 2x welding shoes included with order
- optionally for 3 and 4 mm or 4 and 5 mm wire
- large range of accessoires available



ExOn 2



ExOn 2A

## EXON C3

Small  
light  
high output

- easy handling
- integrated working light
- high air flow
- perfect for weldings in small spaces





# HeatOn-GROUP

— YOUR BEST CHOICE —

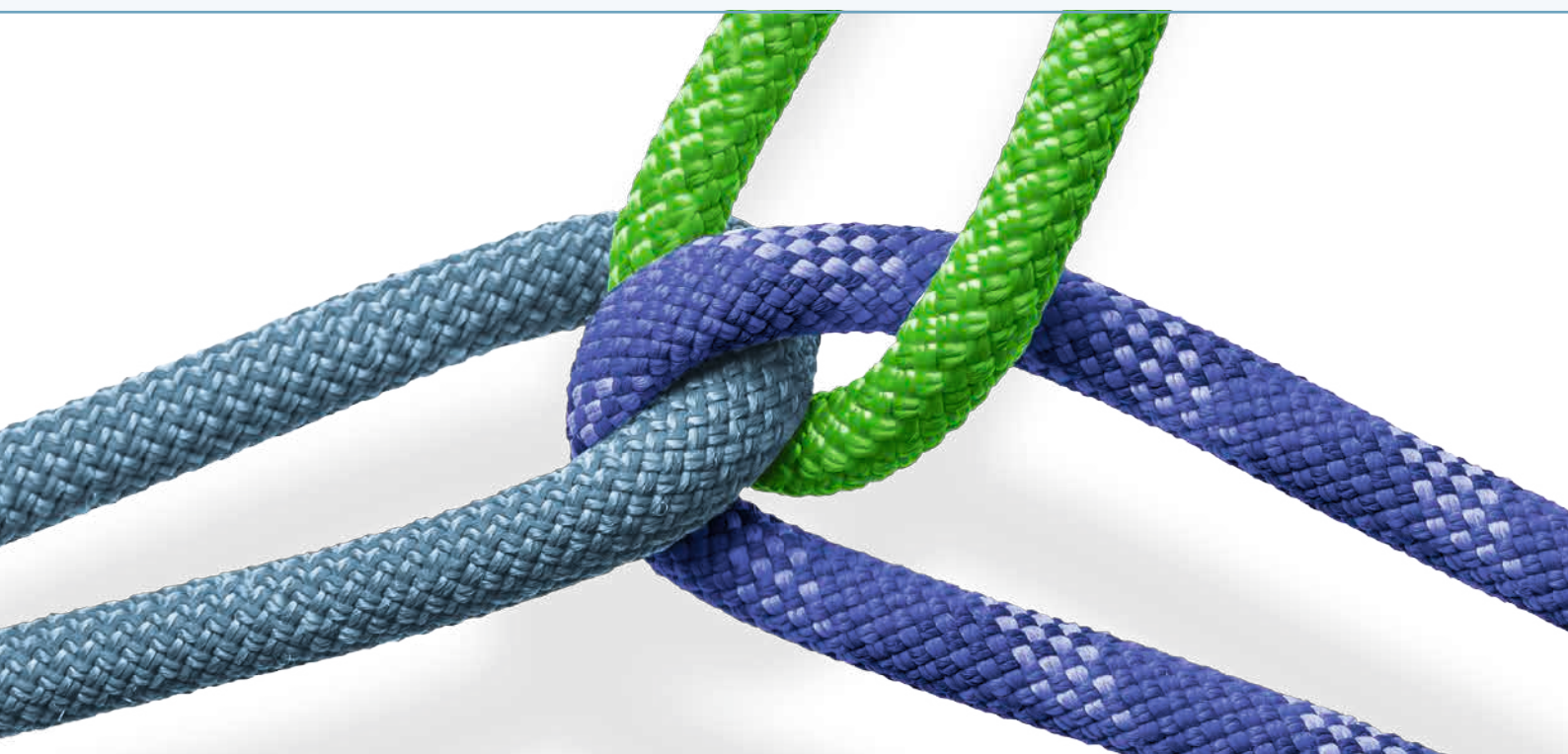
Consulting – Sales – Training – Service – Development

Beratung – Verkauf – Schulung – Service – Entwicklung

**BAK**  
www.bak-ag.com 

**DOHLE**  
www.dohle-extruder.de

**HERZ**  
www.herz-gmbh.com



## **BAK Technology AG**

Industriestrasse 6  
6064 Kerns/Switzerland

Tel. ++41 (0)41 661 22 50, Fax ++41 (0)41 661 22 51  
e-mail [info@bak-ag.com](mailto:info@bak-ag.com)